



Case Study

Eventim Apollo

The Eventim Apollo, formerly the Hammersmith Apollo, is one of the UK's largest original theatres. Designed by architect Robert Cromie, it first opened in 1932 and is one of London's major live entertainment venues.

The Apollo has seen some of the finest live entertainers on stage including The Beatles, Sir Elton John and Kylie Minogue.

“ With such a busy and varied schedule, it was vital for us that we upgraded our stage to the best industry standard. It's great to know that we now have a stage protected and prepared for the next generation of shows and events here at the Eventim Apollo. ”

Josh Clague
Production Manager

Name:	Eventim Apollo
Location:	Hammersmith, London
Project Type:	Theatre stage refurbishment
Product Type:	Harlequin Stage System and Harlequin Standfast vinyl



HARLEQUIN
www.harlequinfloors.com

Case Study

Eventim Apollo

The requirement

The stage had not been refurbished since 1980 so a complete stage refurbishment was required with additional custom stage building.

The solution

Harlequin Floors supplied and installed the 277m² bespoke Harlequin Stage System topped with Harlequin Standfast vinyl performance floor.

Harlequin removed the old vinyl, plywood and original hardwood stage surface. Then the old electrical wiring, and Victorian water pipes that were no longer in use had to be taken out before the installation could commence.

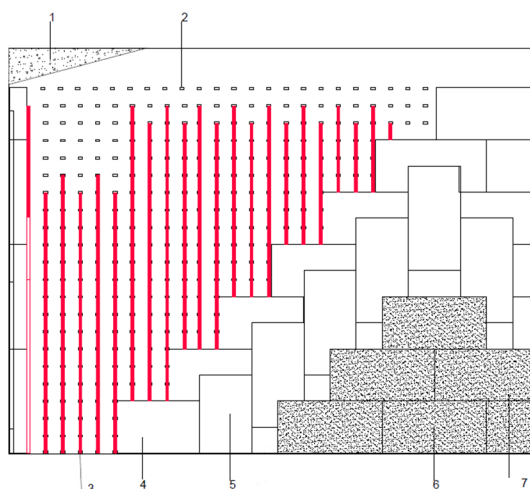
A liquid damp proof membrane was applied and layers of fire-retardant ply were placed around the metal conduits that could not be removed. The battens were laid to a laser level to ensure a flat surface and had acoustic isolation pads attached at predetermined centres.

The stairs to both sides of the stage were custom-made to keep the tread distance the same and to make sure the height matched.

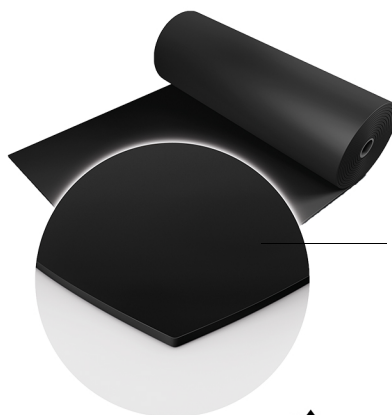
Harlequin also installed a 50mm strip of white vinyl along the downstage edge of the stage to ensure the performers could see the end of the stage during shows.

The stage surface was finished with a permanently installed black Harlequin Standfast performance floor.

Bespoke Harlequin Stage Floor



- 1 - Concrete slab
- 2 - Acoustic isolation pad
- 3 - Timber batten
- 4 - 1st layer plywood
- 5 - 2nd layer plywood
- 6 - Flooring grade plywood
- 7 - Harlequin Standfast vinyl



Harlequin Standfast

Homogeneous PVC with a slip-resistant performance surface

If you would like further information, advice and samples, please contact us on +44(0)1892 514 888 or enquiries@harlequinfloors.com



HARLEQUIN
www.harlequinfloors.com