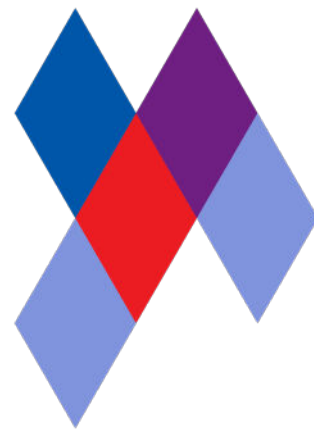


# Harlequin Rocksure™



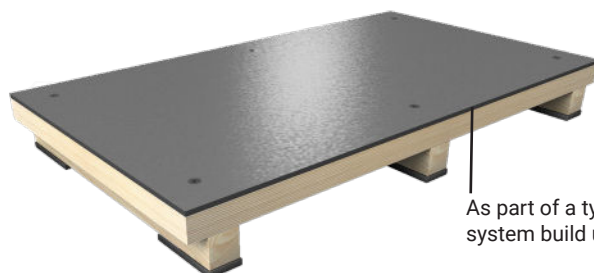
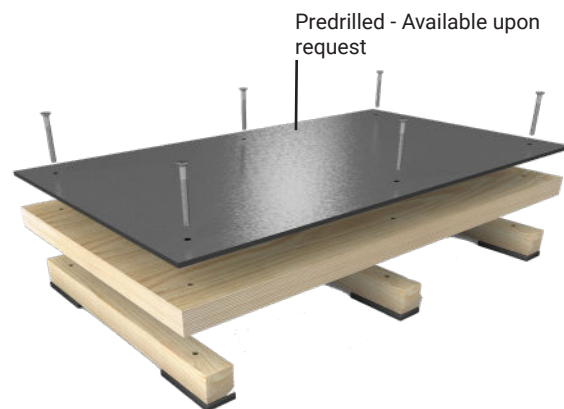
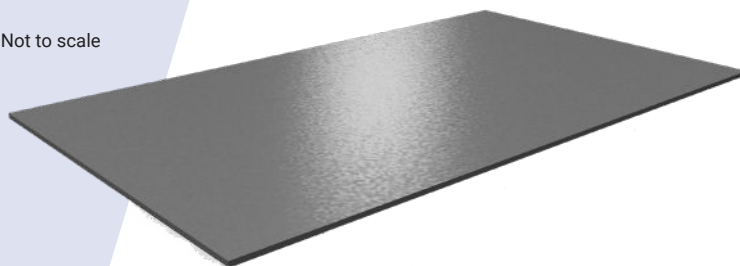
**Harlequin Rocksure** is an extremely tough, water resistant stage surface made from polymer composite. It is extremely hard wearing, will not warp and can be drilled and screwed as conventional hardwood with carpenter tools. Harlequin Rocksure offers an attractive matt black alternative to more traditional stage surfaces such as wood, a painted "sacrificial" layer of hardboard or heavy-duty vinyl.

**Installation:** Harlequin Rocksure can be installed by the Harlequin technical team for new stage builds and stage refurbishments, it is also available to purchase by the sheet and can be pre-drilled if required. Expansion joints are not required.

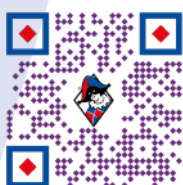
## Specification guide

Permanent or Portable	Permanent
Sheet Dimensions	2.4m x 1.2m (Nominal)
Colour	Matt black with a frost emboss
Weight	8.4kg/m <sup>2</sup>
Thickness	6mm
Fire Rating	Bfl-s1 (EN 13501-1)
Flammability	U.L.94 HB
Flame retardant	Electrical resistance and insulation
High Fusion Temperature	Withstands heat exceeding 200°C. Low coefficient of thermal expansion
Compression Strength	172-250 MN/m <sup>2</sup>
Flexural Strength	152 MN/m <sup>2</sup>

Not to scale



As part of a typical stage system build up.



If you would like further information or advice please contact us on  
+44(0) 1892 514 888 or [enquiries@harlequinfloors.com](mailto:enquiries@harlequinfloors.com)

The Company reserves the right to make any variation in design or construction of the material described. Harlequin® is a registered trademark of British Harlequin plc. © Harlequin Floors 05/2023

LONDON ♦ LUXEMBOURG ♦ BERLIN ♦ FORT WORTH ♦ MADRID ♦ PARIS ♦ PHILADELPHIA ♦ SYDNEY ♦ HONG KONG ♦ TOKYO ♦ LOS ANGELES



**HARLEQUIN**  
[www.harlequinfloors.com](http://www.harlequinfloors.com)