



**HARLEQUIN**

[www.harlequinfloors.com](http://www.harlequinfloors.com)

Harlequin's range of  
performance floors for

# Cruise Ships

# The world performs on Harlequin floors

---

Harlequin is the world leader in advanced technology floors and stages for the performing arts. Established in the UK over 45 years ago, Harlequin remains the industry choice for the world's most prestigious dance and performing arts companies, theatres, venues and schools.

Harlequin is a global company with offices in the UK, Europe, Asia, and The Americas, and a trusted distribution network covering the UAE and India.

## Cruise Ships

Cruise line owners and operators rely on Harlequin's experienced cruise ship installation teams for specialist floors and stage building services. Harlequin design, build and refurbish performance floors and stages, working with stage engineers and theatre consultants in leading venues across the world.

For any stage build or refurbishment, Harlequin can deliver the project efficiently, on time and on budget. Our technical team understands the demands of high specification standards in theatre venues and tailor each venue to its specific requirements, taking into consideration the dip traps and service panels, serapid tracks, rain troughs, revolves demountable stage extensions, drop storage and facilities to enable pyrotechnics.





A selection of our clients:





# Working with stage intergration teams

Operating across the world, in dry docks and at sea, the Harlequin Cruise Ship installation teams work closely with world renowned stage integration teams, like TAIT and technical solution providers such as Push The Button and Videlio to deliver top quality finished stages on time and on budget.

**TAIT**

videlio 

# Rehearsal studios

Cruise line entertainment departments rehearse their productions in impressive studios on land before they take their productions to the high seas.

The studio sizes are usually vast, spanning between 20,000 and 100,000 square feet in size, with numerous studios and rehearsal rooms. Equipped with state-of-the-art production facilities including lighting, stage design and audio engineering it is important that the rehearsal facilities reflect the environment and facilities on board the cruise ship. It is important for the dancers to rehearse on the same quality performance floor that they will be performing on at sea.

Harlequin has installed the 60,000 square feet of rehearsal space at the Royal Caribbean Production Studio, where over 150 rolls of Harlequin Cascade were installed and over 530m<sup>2</sup> of studios at Southampton for Carnival Cruises.



# Design and Innovation

The Harlequin product range is continually evolving to meet the changing demands and advancing technical requirements needed for global performance venues, theatres and cruise ships. Harlequin's comprehensive experience working in this market ensures a complete understanding of the technical specifications and demands of working stages.

Stage floors are integral to performance spaces; aesthetics, functionality and acoustic properties are all factors that require consideration.

The floor surface must provide a safe working environment for both the performers and the technical teams. The stage needs to be durable, low maintenance, capable of carrying heavy loads including scenery, props and trucks and hard-wearing enough to withstand fit-ups, get-outs and rigging - show after show.

As cruise lines invest more in top-tier performances to entertain their audiences, the onboard theatre facilities are under increasing pressure to offer the same sophisticated and state-of-the-art stage sets that would be found in leading venues around the world. With the English National Ballet performing on Cunard's Queen Mary 2 and the American Ballet Theatre performing on Celebrity Cruises, the performers require and expect the same high quality dance floors that they would dance on at home.

# Unrivalled experience

Harlequin's technical teams regularly build and refurbish stages at the world's most prestigious venues, from the Vienna State Opera House to the Sydney Opera House.

Harlequin has developed and installed a ballet wagon for the Royal Opera House in London, flying ballet wagons at the Het Muziektheater in Amsterdam and the Oslo Opera House, and has undertaken complete stage refurbishments at many theatres including the Royal and Derngate Theatre and the Guildhall School of Music and Drama.

West End musicals like 42nd Street, Thriller, Madame Butterfly, and Hamilton all perform on Harlequin floors, as do many stage production companies for touring concerts with world-class performers, including Take That, Hugh Jackman, Björk, and Rod Stewart.



# Harlequin Performance floors for Cruise Ships

Experience, research and innovation drive product development at Harlequin. As the leading global manufacturers of sprung floors and vinyl performance surfaces, Harlequin has designed a range of products tailored to suit the requirements of specific dance genres and the venues in which they will be used.

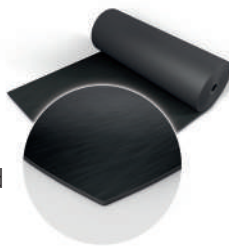
Every stage is different, but many have the same technical challenges as traditional theatres with dip traps and service panels, serapid tracks, rain troughs, revolves, demountable stage extensions, drop storage and facilities to enable pyrotechnics.

## The Harlequin product range

Harlequin has a wide range of permanent and portable performance flooring options for cruise ships, and can offer local service and delivery to any dry docks around the world, or even work when the ship is mid-cruise.

### Harlequin Marine™

**Harlequin Marine** is a hard-wearing, homogeneous vinyl dance floor which conforms to International Marine Organization (IMO) standards and fire ratings and is widely installed on cruise liners. It is fire resistant, with a slightly marbled surface.



Black - 501

### Harlequin Cascade™

**Harlequin Cascade** is Harlequin's flagship professional vinyl performance floor, used by the world's leading dance companies and dance venues. As a hard-wearing homogeneous vinyl, it has a slip resistant smooth dance surface and is ideal for use in dance studios, theatres, concerts and as a high-quality base for lighting designers and photographers.



Dark Grey - 406

### Harlequin Standfast™

**Harlequin Standfast** is a durable multi-purpose homogeneous vinyl performance floor with a slip-resistant surface. It is an ideal heavy-duty floor for studios as well as stage flooring for dance studios and theatres.



Grey - 004



Black



Dark Grey



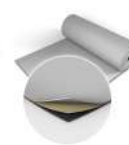
Light Grey



Black



Hazlenut



Light Grey

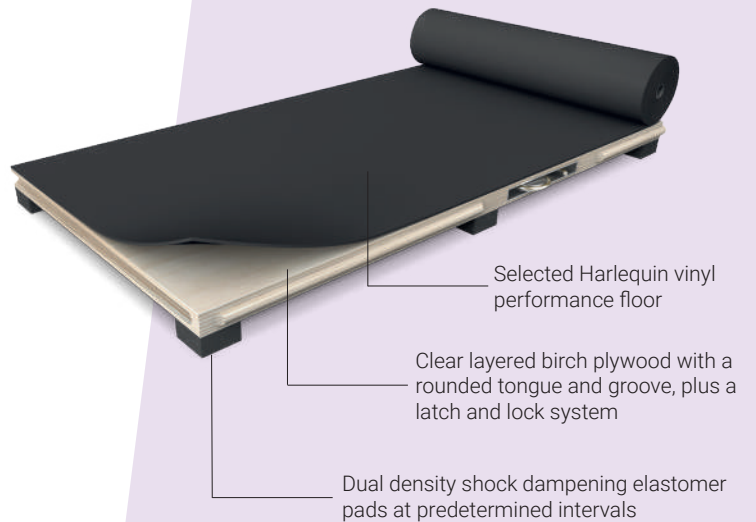


White



## Harlequin Liberty™

When a sprung wooden floor is required for a specific tour or performance, a pop-up performance floor can be provided. Harlequin Liberty is a sprung floor panel system supported by dual density shock dampening elastomer pads and joined together with a 'one turn of the key' latch and lock mechanism. This is a cost-effective and versatile option for touring dance companies that require greater absorption from a floor to support them with lifts and jumps.



## Bespoke printed floors

A printed finish is available on Harlequin Cascade, Harlequin Reversible Pro and Harlequin Clarity vinyl floors.

You can have a bespoke design, or select a pattern, image or logo. A printed vinyl floor is perfect for touring theatre production and performances. We have supplied the Norwegian Cruise line "Encore" vessel with a printed floor for the cast of Kinky Boots.

## The Harlequin installation teams

Harlequin's cruise ship installation teams have many years' experience installing specialist floors and stages in marine environments, working closely with stage integration companies. All Harlequin installers are CSCS and CFA approved.

Harlequin combines traditional floor construction skills using natural materials and advances in engineered floor products to meet the most demanding stage specifications.

Initial site visits can be made at any port. Work is usually undertaken whilst the vessel is in dry dock but can be carried out when in service.

Harlequin can also offer some performance flooring products on a 'supply only' basis.





# Case Study

# Marella Explorer 2

## Overview



Marella's first adults-only, 1814 capacity passenger ship, the Marella Explorer 2 set sail on its maiden voyage April 2019.

The Broadway Show Lounge stage underwent a full refurbishment during the Marella Explorer 2's dry dock refit in Cadiz, Spain.

Onboard entertainment production company, Ted Group, produced two brand new shows for the theatre space, "Revive! The Forgotten Circus" and "Lovestruck".

### Project highlights

<b>Name:</b>	Tui Marella Cruises
<b>Location:</b>	Dry dock Cadiz, Spain
<b>Project Type:</b>	Stage refurbishment
<b>Building Type:</b>	Cruise Ship vessel
<b>Product Type:</b>	Harlequin Standfast
<b>Stage Contractor:</b>	Ted Group
<b>Stage Area:</b>	182.55 m <sup>2</sup>





# Case Study Marella Explorer 2

## The requirement:

Stage refurbishment and new stage surface.

## The solution

The centre stage featured a double revolve requiring bespoke access panels, orchestra pit lifts and a newly created LED wall. Harlequin's specialist installation teams installed a new plywood surface over the original solid wood sub-floor. A feather finish created a smooth, level surface on to which Harlequin Standfast vinyl flooring was permanently laid with adhesive and fully welded seams. PVC nosing was fitted to the front of the stage and edges were painted black.

Harlequin Standfast  
(Black)

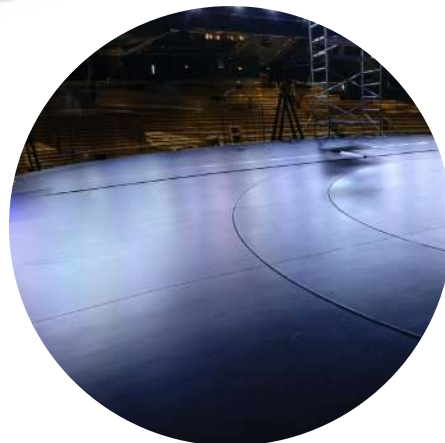
Homogeneous PVC  
with a slip-resistant  
performance surface



Marella Explorer



Marella Explorer







# Case Study Caribbean Princess

## Overview

Princess Cruise Lines, part of Carnival Corporation, invested \$8.2 million in a full renovation programme on the Caribbean Princess.

Measuring 290m, the 113 tonne cruise ship entered the Grand Bahama Shipyard Dry Dock for a full makeover. Over 11 tonnes of steel was used in structural projects on the hull and upper decks and intricate Princess livery created on the bow of the vessel. The ship's

Explorers Lounge underwent a full stage refurbishment.

Showcasing Broadway-style productions at sea, the Princess' theatre is amongst the largest of the ships entertainment venues with state of the art facilities to accommodate elaborate stage sets.



## PRINCESS CRUISES

### Project highlights

<b>Name:</b>	Princess Cruises
<b>Location:</b>	Dry dock Bahamas
<b>Project Type:</b>	Stage refurbishment
<b>Building Type:</b>	Cruise Ship vessel
<b>Product Type:</b>	Harlequin Cascade
<b>Stage Contractor:</b>	Tait Stage Technologies
<b>Stage Area:</b>	282 m <sup>2</sup>





# Case Study Caribbean Princess

## The requirement:

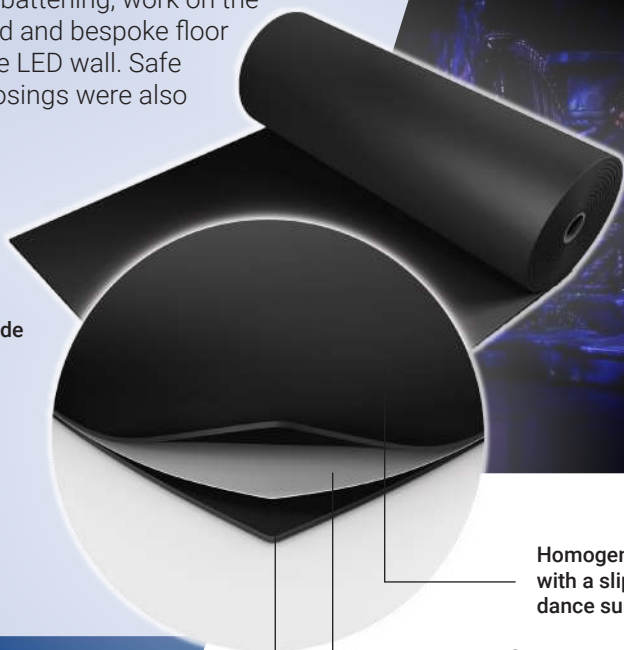
Stage refurbishment and new stage surface.

## The solution

Harlequin's highly skilled installation team carried out a full stage replacement removing all existing plywood from the main stage and laid over 280m<sup>2</sup> of black Harlequin Cascade vinyl performance surface with adhesive and fully welded seams.

The proscenium arch and centre stage refit included the installation of two layers of plywood; down stage and up stage performer lifts, access panels, demountable sections, Serapid tracks, feather and black paint finish, steel rain trough removal and battening, work on the steelwork grid and bespoke floor guides for the LED wall. Safe edges and nosings were also installed.

Harlequin Cascade  
(Black)



Homogeneous PVC  
with a slip-resistant  
dance surface

Mineral fibre  
reinforcement

Homogeneous  
PVC





# Case Study Emerald Princess and Grand Princess

## Overview

Princess Cruise Lines, part of Carnival Corporation, carried out a dry dock refit in the Bahamas on the Emerald Princess and the Grand Princess vessels.



**PRINCESS  
CRUISES**

### Project highlights

<b>Name:</b>	Princess Cruises
<b>Location:</b>	Dry dock
<b>Project Type:</b>	Stage refurbishment
<b>Building Type:</b>	Cruise Ship vessel
<b>Product Type:</b>	Harlequin Cascade
<b>Stage Contractor:</b>	Stage Technologies Ltd





# Case Study Emerald Princess and Grand Princess

## The requirement:

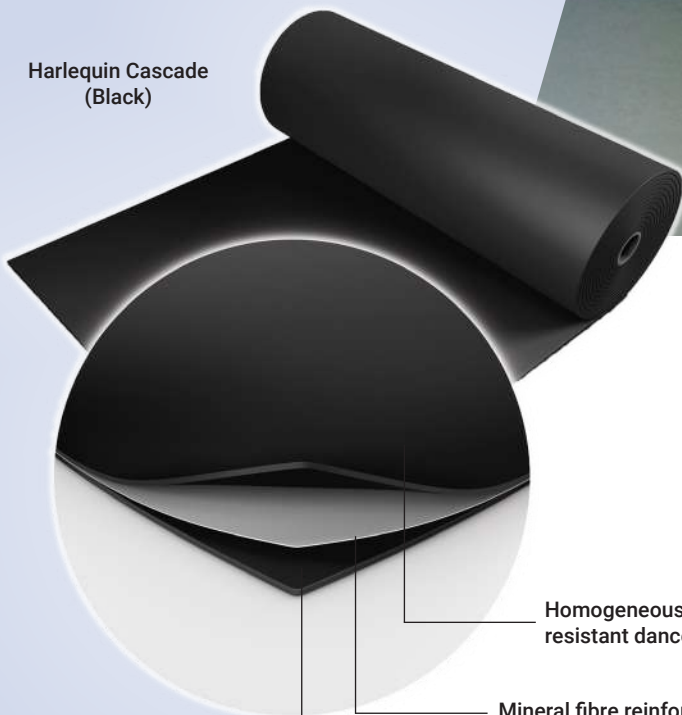
Stage refurbishment and new stage surface.

## The solution

The main stage refurbishment projects were carried out in conjunction with Stage Technologies Group.

The existing floor coverings were removed, and defects in the plywood sub-floors were repaired. A latex screed with a flexible smoothing compound was used to give a suitable finish before the Harlequin Cascade was permanently laid, with seams welded and silicone sealant applied to its perimeters. PVC nosings were then installed on the steps on each side of the stage leading into the audience area.

Harlequin Cascade  
(Black)



Homogeneous PVC with a slip-resistant dance surface

Mineral fibre reinforcement

Homogeneous PVC





## Case Study

# Ventura

### Overview

P&O Cruises Ventura underwent a major refit in Monfalcone, Italy. Launched in 2008, the cruise ship is one of the largest of the P&O ships carrying over 3,000 passengers.

The Area Theatre is a large show-lounge and venue for West End review style shows, tribute acts, presentations and recently released films. The Headliners Theatre Company offers twice-nightly high energy performances.



### Project highlights

<b>Name:</b>	Ventura
<b>Location:</b>	Dry dock
<b>Project Type:</b>	Stage refurbishment
<b>Building Type:</b>	Cruise Ship vessel
<b>Product Type:</b>	Harlequin Cascade, Harlequin Marine





## Case Study

# Ventura

## The requirement:

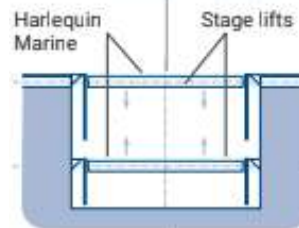
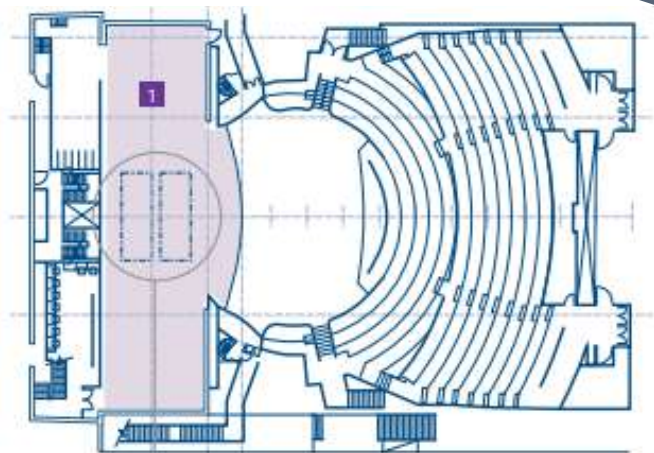
Stage refurbishment and new stage surface.  
Initial fit-out and re-fit of Main Stage, Explorers Lounge & Deck 5 Scenery Store.

## The solution

Harlequin Cascade vinyl flooring was installed to the plywood sub-floor of the main stage and cut to fit around Serapid tracks, traps and stage lifts.

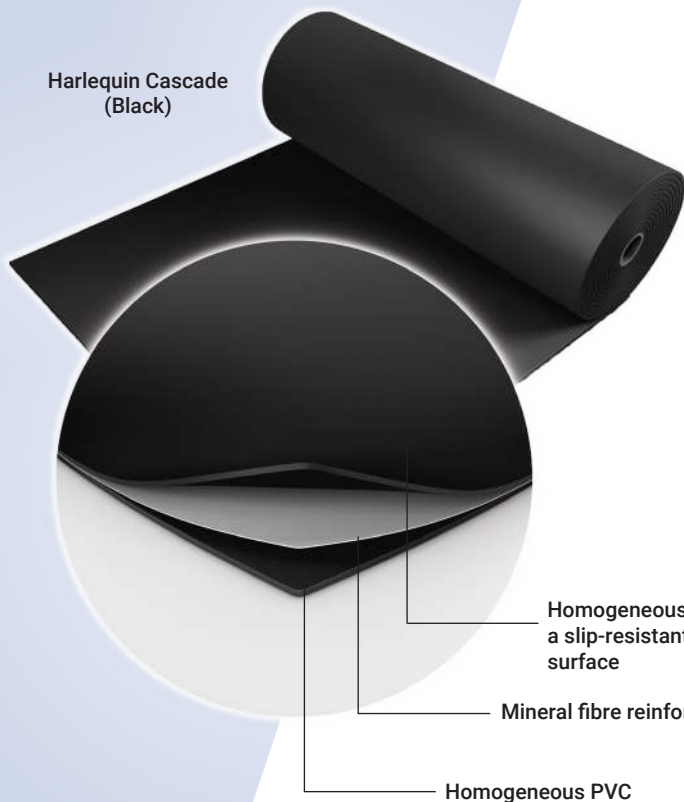
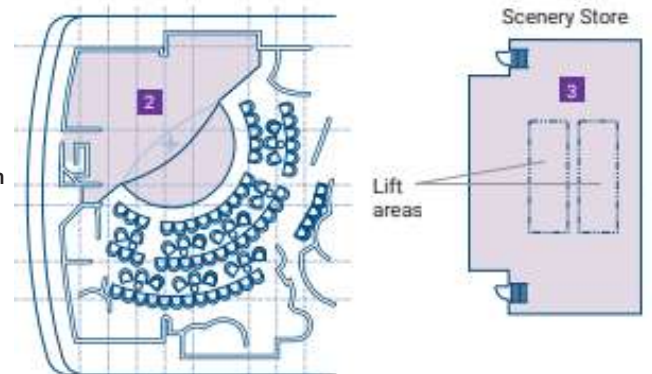
A special screed was laid directly onto the metal deck immediately below the main stage and Harlequin Marine was installed onto the screeded area, including the surface of the stage lifts.

Harlequin Cascade was installed onto the plywood surface of the fixed stage area and revolve stage extension of the Explorer Lounge.



- 1 Main Stage: 265m<sup>2</sup>
- 2 Scenery Store: 109m<sup>2</sup>
- 3 Explorer Lounge: 168m<sup>2</sup>

Cross section of below stage storage area with stage lifts



Harlequin Cascade (Black)

Homogeneous PVC with a slip-resistant dance surface

Mineral fibre reinforcement

Homogeneous PVC



# Case Study

# Superstar

# Pisces and

# Aquarius

## Overview

Refurbishments were carried out on both Star Cruises' Superstar Pisces and Aquarius ships.



### Project highlights

<b>Name:</b>	Star Cruises
<b>Location:</b>	Dry dock
<b>Project Type:</b>	Stage refurbishment
<b>Building Type:</b>	Cruise Ship vessel
<b>Product Type:</b>	Harlequin Cascade





# Case Study Superstar Pisces and Aquarius

## The requirement:

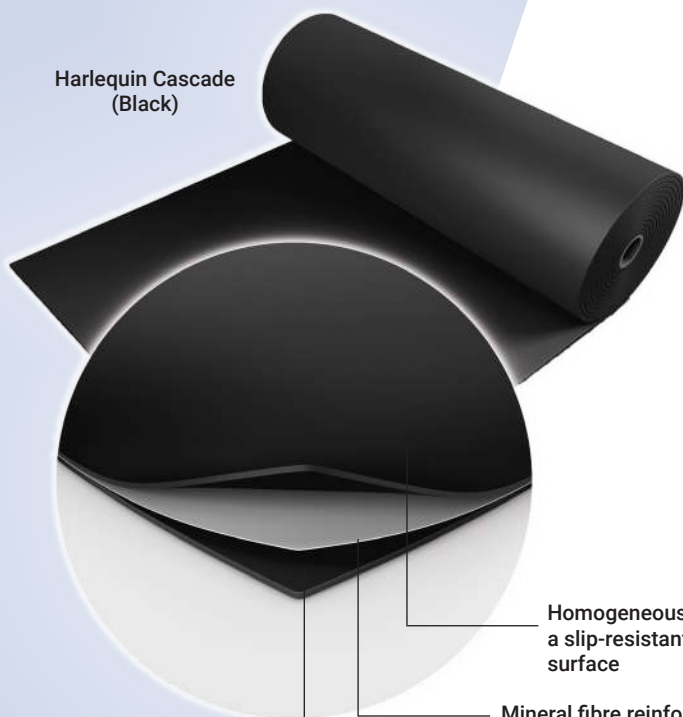
Stage refurbishment and new stage surface.

## The solution

Harlequin removed the existing stages and replaced the plywood on both using two layers of Dricon® fire retardant treated 18mm timber onto Isorubber, fixed with tech screws through the plywood and Isorubber impact sound isolator.

The plywood joins were filled and sanded to a suitable finish before installing Harlequin vinyl top surfaces. Harlequin Cascade was then installed lengthways across both stages with seams welded and silicone sealant to the perimeter abutting walls.

The wooden plinths at the front of both stages were stripped of varnish, sanded and repaired then recoated with three coats of marine approved varnish.

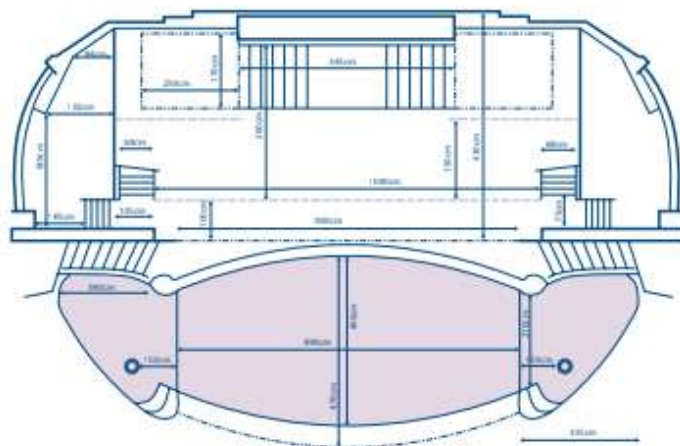


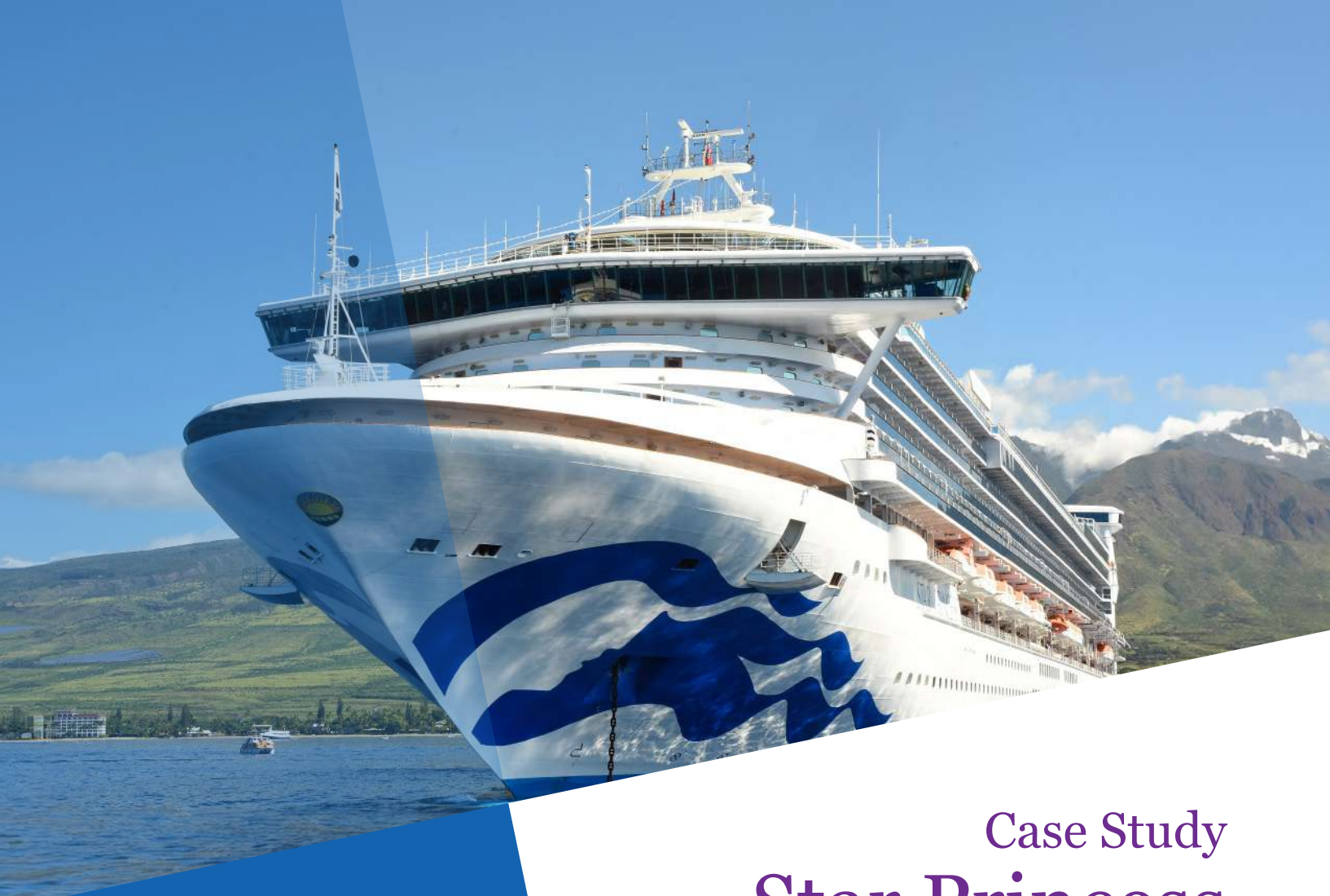
Harlequin Cascade  
(Black)

Homogeneous PVC with  
a slip-resistant dance  
surface

Mineral fibre reinforcement

Homogeneous PVC





# Case Study

# Star Princess

## Overview

The Star Princess carries 2,600 passengers on amenity-rich cruises worldwide.

Princess Cruises' Star Princess underwent a two-week dry dock multi-million-pound renovation programme.

The Princess Theatre showcases Broadway-style productions at sea featuring dazzling stage sets, artists from around the globe, modern hits and timeless classics.



### Project highlights

<b>Name:</b>	Princess Cruises
<b>Location:</b>	Dry dock Victoria Canada
<b>Project Type:</b>	Stage refurbishment
<b>Building Type:</b>	Cruise Ship vessel
<b>Product Type:</b>	Harlequin Cascade
<b>Contractor:</b>	Tait Technologies





# Case Study

# Star Princess

## The requirement:

Stage refurbishment and new stage surface.

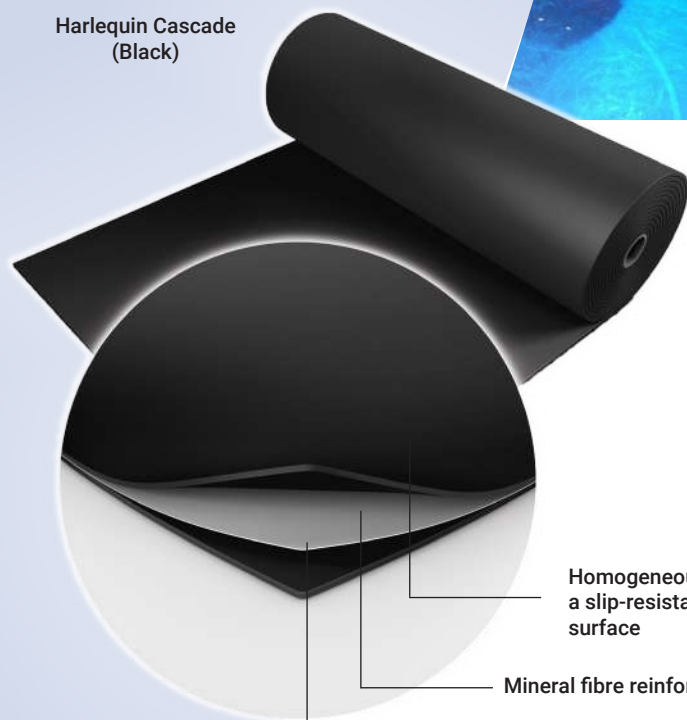
## The solution

Uplift and reinstall insulation, three layers of plywood feather finished with a Harlequin Cascade surface welded with fixings, nosings and adhesive.

The refurbishment included a unique rain trough and an intricate complex series of traps and stage lifts.



Harlequin Cascade  
(Black)

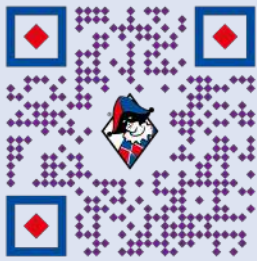


Homogeneous PVC with a slip-resistant dance surface

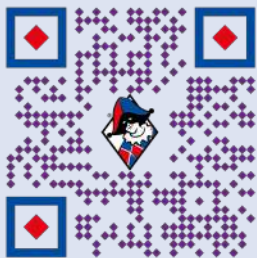
Mineral fibre reinforcement

Homogeneous PVC

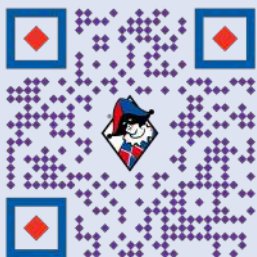




Contact Us



About Us



Who we work with



**HARLEQUIN**  
www.harlequinfloors.com