



HARLEQUIN
www.harlequinfloors.com

A guide to

EVENT & PRODUCTION FLOORS



STEP INSIDE A WORLD OF PERFORMANCE

The world performs on Harlequin floors

Björk's Cornucopia
Harlequin Hi-Shine | Harlequin Bespoke Printed
© Santiago Felipe courtesy of The Shed



WARNER BROS.



Mercedes-Benz



澳門銀河



Established in England in 1977, Harlequin is the world leader in advanced technology floors for performing arts, theatres, events and productions.

Harlequin's experience and reputation are founded on the design, manufacture and supply of a range of high quality portable and permanent sprung and vinyl floors, preferred by performers at the world's leading venues.

Harlequin's event and display floors are the industry choice for TV and film production, concerts and tours, product

launches, fashion shows, window displays and exhibitions.

Forty years after its creation, Harlequin is the global leader in its field with operations across Europe (London, Luxembourg, Liège, Berlin, Paris and Madrid), Asia Pacific (Hong Kong, Japan and Sydney) and the Americas (Philadelphia, Los Angeles and Forth Worth).



CIRQUE DU SOLEIL



PANDORA™



Givenchy SS19 | Harlequin Hi-Shine

SUSTAINABILITY

Harlequin is committed to sustainable development and our corporate responsibility in this area forms a fundamental part of our business strategy. We believe that sustainability is a team effort across the entire company, driven and supported by our board of Directors.

We continually monitor the environmental impact of our manufacturing processes and operations and ensure that every department works together to plan, measure and improve our social and environmental performance.

This plan is continually being reviewed to meet our ongoing commitment to improve our overall sustainability and to reduce carbon emissions, helping us to reach Net Zero emissions.

Harlequin Wood Flooring

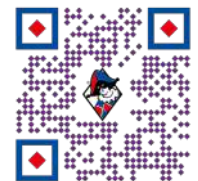
- All timber used by Harlequin is responsibly sourced from sustainable well managed forests that are either FSC or PEFC certified.
- Harlequin has demonstrated their commitment to sustainability by gaining FSC 'Chain of Custody' Certification.
- Harlequin is the only performance floor manufacturer to use sustainable bio-based lignin glue in their birch plywood products, giving significant reduction in carbon footprint and VOC emissions.
- All Harlequin wood flooring is 100% recyclable and can be converted into sustainable biomass to generate energy.
- Our Harlequin Activity floor has exceptionally high thermal and sound insulation properties helping to reduce noise transmission and energy use.
- All Harlequin timber waste and installation offcuts are sent for recycling for conversion into sustainable biomass to generate energy.



Harlequin Vinyl Flooring

- Harlequin is committed to reuse and recycle all Harlequin products wherever possible.
- Harlequin runs a proactive 'Take Back' scheme under which post installation and post use products are recycled into second life products. All Harlequin vinyl flooring is 100% recyclable. Any Harlequin vinyl floor can be returned to our UK warehouse (or collected for a fee) for recycling. T&C's apply.
- Since Harlequin Floors introduced their 'committed to recycling' scheme, diverting material away from landfill, the programme has saved 282 tonnes of CO² emissions.
- All Harlequin vinyl flooring contains between 23%-30% post manufacture recycled content.
- Harlequin vinyl floors are extremely durable and are designed to be reused many times. Some prestigious dance companies have been using their Harlequin Cascade floors for over 20 years. Our Harlequin Hi-Shine the choice of touring bands who use it night after night on the road. Our Harlequin Fiesta is designed to be used without glue, making reuse and recycling much easier. And our Harlequin Reversible floor is 'two floors in one', if one side becomes worn it can be easily turned over to use the other side so doubling the life of the floor.
- Harlequin's own range of specialist cleaning products help to protect our vinyl floors so extending the life cycle of our products.
- Unlike other manufactures, we offer our vinyl floors in a wide range of roll length enabling our customers to by the amount of flooring that they actually need, so reducing waste.
- All Harlequin vinyl flooring products have been tested for VOCs, achieving Intertek's Clean Air Gold Certification for emissions and complying with both BREEAM (Building Research Establishment Environmental Assessment Method) and LEED (Leadership in Energy & Environmental Design) requirements for good indoor air quality.
- Harlequin uses only solvent free adhesives and print inks.
- Harlequin vinyl flooring is manufactured from 56% renewable ingredients.
- All raw materials used in the manufacture of Harlequin vinyl flooring are REACH (Registration, Evaluation, Authorisation and Restriction of Chemicals) compliant and do not contain any SVHC (Substances of Very High Concern) in concentrations greater than 0.1% (w/w).
- All Harlequin vinyl flooring products contain no CMR (Carcinogenic, Mutagenic, Reprotoxic) Category 1 or 2 substances.
- All Harlequin vinyl flooring products are free from formaldehyde and are classified as conforming to Class E1.
- Harlequin conforms to the recommendations of Vinyl Plus, the European PVC industry's commitment to sustainable development.

BREEAM®



WHO WE WORK WITH

Harlequin manufactures, supplies and installs the world's best performance floors and stages in international opera houses and theatres, dance companies, performing art schools, global events, TV & film productions, cruise ships and leisure venues.

Harlequin is the flooring choice of leading stage production companies including Brilliant Stages, Stufish and Scott Fleary productions Ltd to create the perfect stage for multiple A-list celebrity tours, concerts and performances.

THE NEXT
STAGE

STUFISH

sf scottfleary
the creative construction company

Litestructures

TAIT

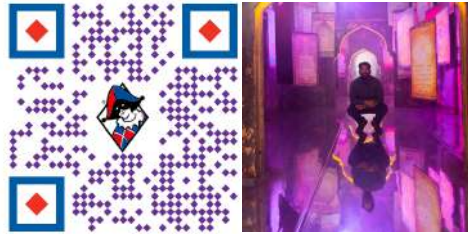
TAG Live



Imperial War Museum



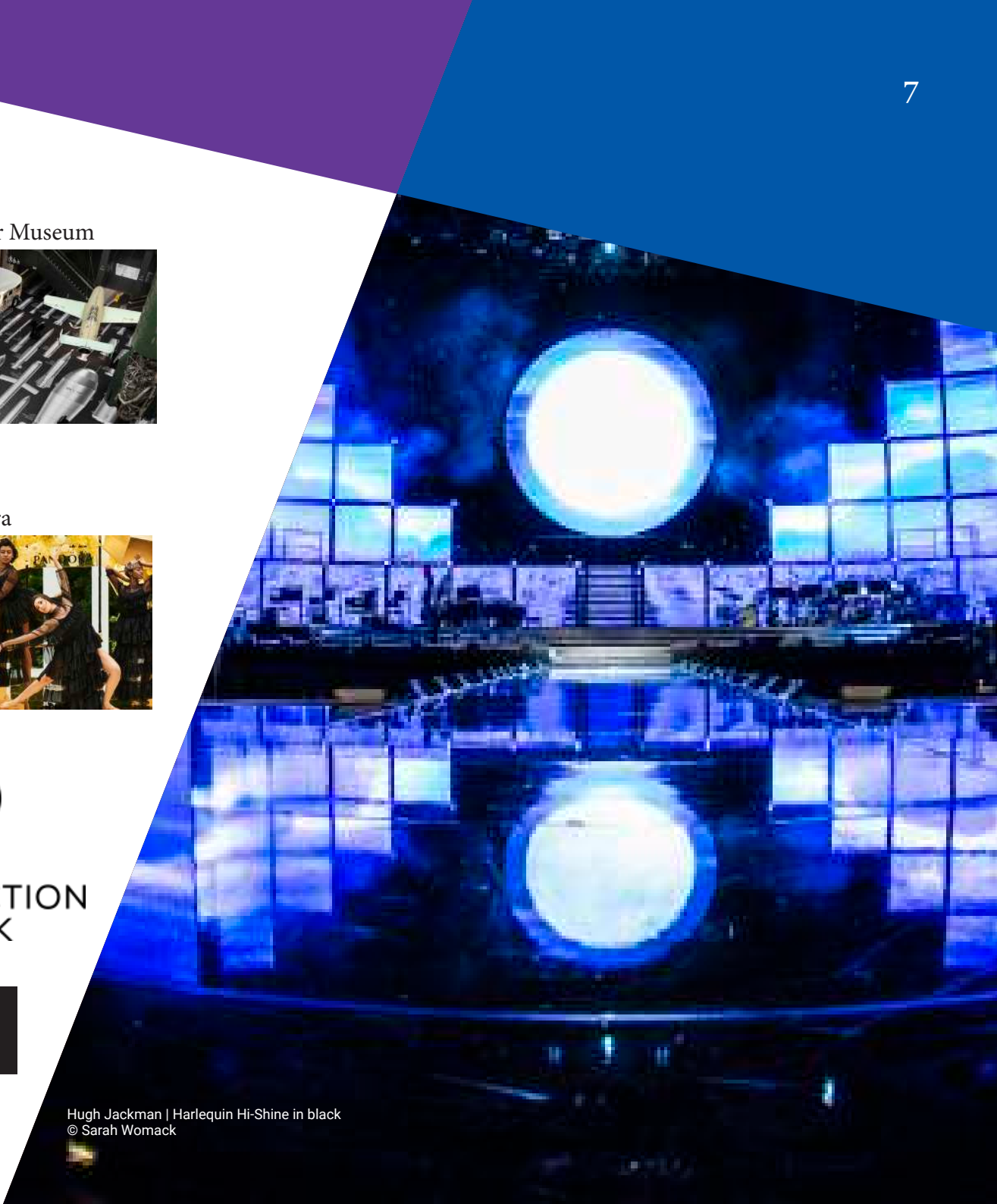
Soul City Arts



Pandora



PRODUCTION PARK



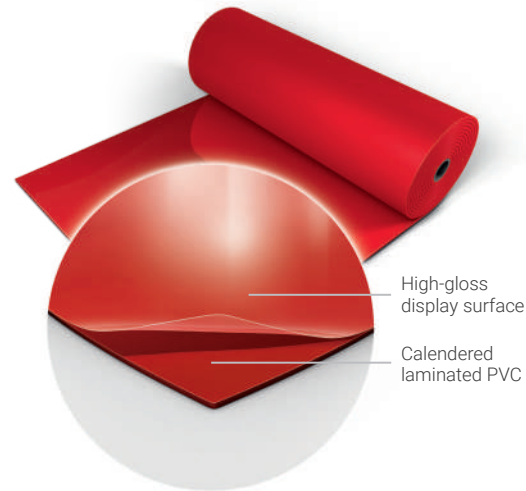
Harlequin Hi-Shine

A BRILLIANT CHOICE

Harlequin Hi-Shine is widely used for TV and film production, concerts and tours, product launches, fashion shows, window displays and exhibitions. It is the floor of choice for artists including Little Mix, One Direction, Lady Gaga, Will.i.am, Michael Bublé, Take That, Hugh Jackman, Kylie and Björk and has been used on numerous TV shows including The X Factor and Britain's Got Talent.

A Harlequin Hi-Shine floor is a brilliant choice for any occasion. Harlequin Hi-Shine has a unique high gloss display surface which provides a breath-taking reflective finish with excellent scratch-resistance. It is specified for loose-lay installation and rolls out easily on any flat, firm surface.

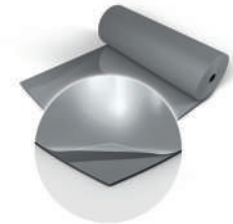
Red - 038



Black - 005



Grey - 002



White - 019

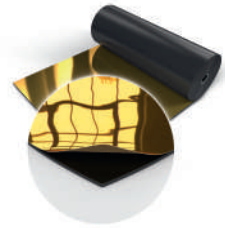


Blue - 039



Harlequin Hi-Shine Metallic

Gold - 050



Silver - 025



The Hi-Shine metallic range, in Gold and Silver, is the latest addition to the Harlequin Hi-Shine range of floors. A worldwide hit with producers of TV shows, set designers, touring bands and fashion shows, these new high impact colours bring another dimension to the brilliant look of Harlequin Hi-Shine.

Specification Guide

| | |
|-----------------------|---|
| Permanent or Portable | Portable |
| Roll width | 1.5m |
| Roll lengths | 10m, 15m, 20m, 30m |
| Colours | Black, White, Red, Blue, Grey, Gold, Silver |
| Thickness | 1.5mm |
| Weight | 1.96kg/m ² |
| Fire rating | Bfl-s1 (EN 13501-1) |





TV Production | Bespoke Printed Harlequin Cascade



Australian Ballet
Bespoke Printed Harlequin Clarity | Harlequin Hi-Shine



Studio Wayne McGregor
Bespoke Printed Harlequin Cascade

Harlequin Bespoke Printed Floors

A FRESH LOOK FOR ANY EVENT

Have you ever thought of having a totally unique floor for your event or display? Well now you can with Harlequin's vinyl printing service.

A printed finish is available on Harlequin Cascade, Harlequin Reversible / Reversible Pro and Harlequin Clarity.

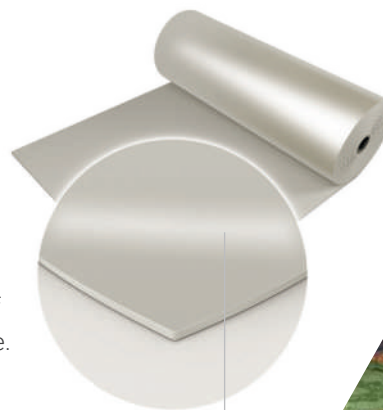
You can have a completely bespoke design or select from our image library.

- Top surface printing
- RAL colour matching available
- Eco-friendly, solvent-free UV cured inks mean very rapid drying times
- Excellent ink adhesion to the substrate gives a durable, abrasion resistant surface
- The fire rating of the Harlequin floor is unaffected
- Free samples available on request

Companies who have selected Harlequin Printed Vinyl floors: Bolshoi Ballet, Studio Wayne McGregor, Matthew Bourne's New Adventures, The Australian Ballet, Versace Hotel, Mercury Theatre, National Theatre, Royal Opera House and many more.

Harlequin Clarity

Harlequin Clarity is a durable clear vinyl flooring with an embossed texture suitable as a dance surface and for high traffic commercial use. It is specially formulated for bespoke reverse digital printing. The printed design is on the underside of the floor and so protected from wear and damage. Reverse printing is a two-stage process with the colour printed first then overlaid with a white background. Harlequin Clarity can also be used as a clear protective wear layer which allows the floor underneath to show through. Harlequin Clarity has the highest abrasion classification available and is a multi-purpose vinyl used for concerts, operatic performances and high traffic commercial purposes.



Homogeneous PVC with a slip-resistant dance surface



Jean-Michel Jarre,
live tour 2016.
Photo courtesy
of Louis Hallonet
Harlequin Reversible
black/grey

Harlequin Reversible

MADE TO PERFORM

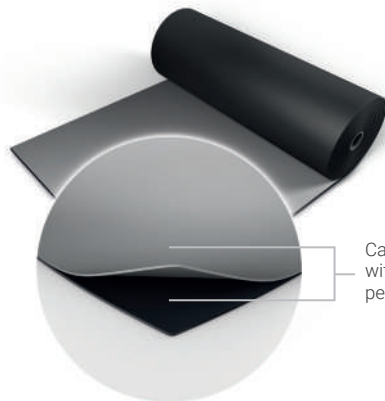


Burn The Floor
Harlequin Reversible

Launched over four decades ago, Harlequin Reversible is the original double-sided dance and stage floor. It is a hardwearing yet lightweight calendered vinyl that is slip resistant on both sides, so providing two floors in one!

Harlequin Reversible is our most versatile loose-lay floor and it is extremely popular among our broad range of customers across the world. It's ideally laid on any hard, smooth surface and is particularly suited to touring due to ease of handling and portability. Special wear coats on both surfaces make it easy to maintain.

Black/Grey - 004



Calendered vinyl
with a slip-resistant
performance surface

Dark grey/Light Grey - 003



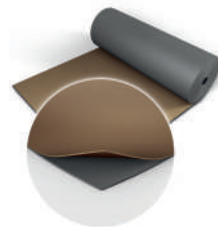
Hazelnut/Beige - 310



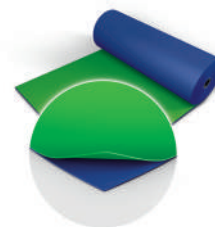
Black/White - 001



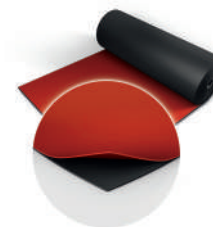
Fog/Tan - 890



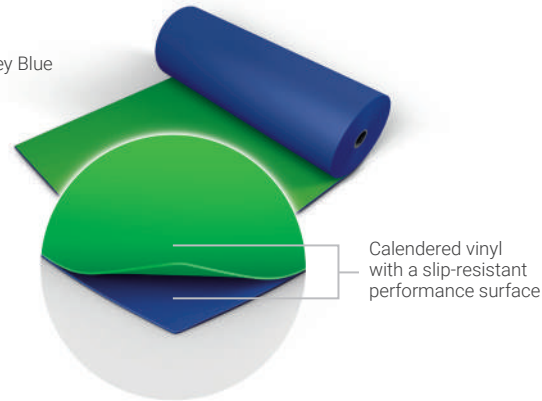
Chroma Key Green/
Chroma Key Blue - 119



Red/Black - 302



Chroma Key Green/Chroma Key Blue



Harlequin Reversible Chroma Key Green/Chroma Key Blue

Harlequin's Chroma Key Reversible vinyl is designed specifically for digital compositing with one side Chroma Key Green and the other Chroma Key Blue. Harlequin's Chroma Key Reversible vinyl is a practical solution for filmmakers

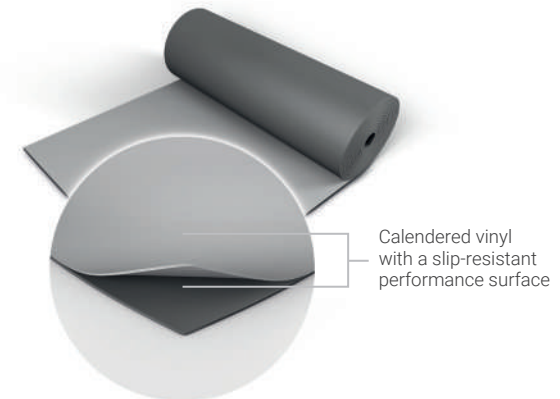
and television producers as both a floor and backdrop. It offers an alternative method to painting and repainting studio floors each time there is a Chroma key requirement for superimposing footage using editing packages.

Specification Guide

| | |
|------------------------------|---|
| Permanent or portable | Portable |
| Roll width | 2m |
| Roll lengths | 10m, 15m, 18m, 20m, 25m |
| Colours | Chroma Key Green/Blue, Black/Projection Grey, Dark Grey/Light Grey, Black/White, Black/Grey, Fog/Tan, Hazelnut/Beige, Red/Black |
| Thickness | 1.3mm |
| Weight | 1.6kg/m ² |
| Fire rating | Bfl-s1 (EN 13501-1) |

Harlequin Reversible Black/Projection Grey

Harlequin's Reversible Black/Projection Grey vinyl absorbs ambient light and delivers a more vivid projection of images on to the vinyl surface. Contrast ratios are enhanced, ensuring less light bleed and less unwanted reflective light. As the leading product on the market for peak gain measurement, Harlequin's Projection Grey provides higher brightness and a wider viewing angle for audiences, through front projection. This is a practical solution for film, TV and theatre production.



Projection Grey/Black - 005

Harlequin Reversible Pro

Harlequin Reversible Pro retains the same slip-resistant surface on both sides as our standard Reversible but, thanks to the introduction of a new mineral fibre interply layer, offers even more dimensional stability, making it an ideal surface for printing.

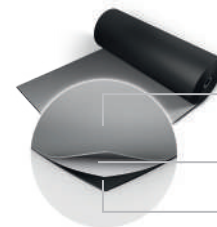
Suitable for a wide variety of uses including ballet, contemporary, percussive dance including flamenco, Irish and tap, multi-purpose use, hip-hop, jazz, street, aerobics, zumba, concerts, display, exhibitions, television, theatres and for operatic performances.

- Heavy duty
- Highly portable and easy to handle
- Quick to roll out and lays flat

Black/White - 001



Black/Grey - 004



Calendered vinyl with a slip-resistant performance surface

Woven mineral fibre reinforcement

Calendered vinyl

Specification Guide

| | |
|------------------------------|---|
| Permanent or portable | Both |
| Roll width | 2m |
| Roll lengths | 10m, 15m, 18m, 20m, 25m, 30m |
| Colours | Black/White, Black/Grey |
| Thickness | 1.5mm |
| Weight | 2.25kg/m ² |
| Fire rating | Bfl-s1 (BS EN ISO9239-1:2010) Compliant (BS EN ISO 11925-2:2010) Class 1 (ASTM E648-10) |

Harlequin Showfloor

SHOWTIME IN NO TIME

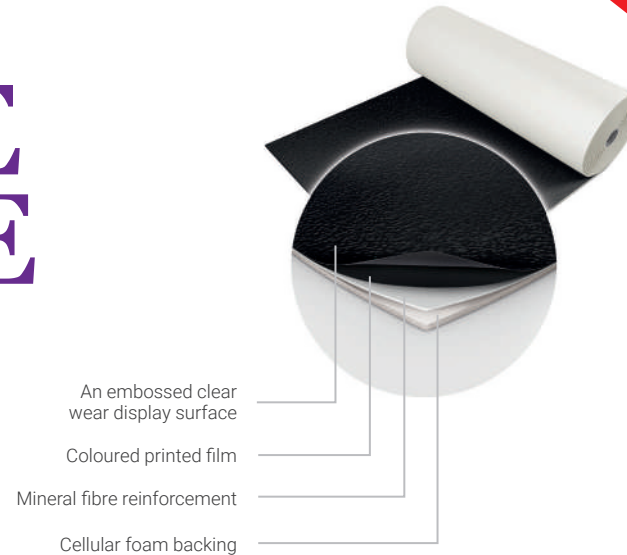
Harlequin Showfloor is perfect for use as a temporary floor for light to medium traffic environments. It has an embossed display surface that helps to prevent scuff marks and its cellular foam backing ensures comfort under foot, helps disguise uneven substrates and provides good impact sound insulation.

Harlequin Showfloor is lightweight, can be laid quickly and stays flat. It can be used over any hard, smooth surface and comes in a range of colours. It is the leading choice for fashion catwalks, exhibition stands, stage sets, events, shows and art displays.

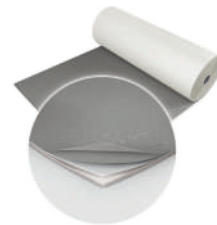
Specification Guide

| | |
|-----------------------|-------------------------|
| Permanent or portable | Portable |
| Roll width | 2m |
| Roll lengths | 10m, 15m, 20m, 25m, 30m |
| Colours | Black, White, Red, Grey |
| Thickness | 2.6mm |
| Weight | 1.7kg/m ² |
| Fire rating | Bfl-s1 (EN 13501-1) |

Black - 021



Grey - 034



White - 019



Red - 043



Harlequin Event Floor Hire

SPRING INTO ACTION

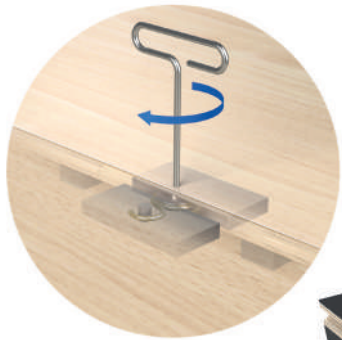
A sprung floor flexes under impact giving a softer feel and helps to protect the dancer from injury. Performers need a sprung floor to absorb the shock of repeated impact to their joints and reduce injury from falls.

With the temporary nature of events, purchasing a sprung floor is not always necessary and budgets don't always allow for it. To meet your needs, Harlequin provides a hire service of its Liberty sprung floor panels so that you can install a floor specifically for your event and then return it once it's finished.

Available for both short-term and long-term hire from a single day to several months.

Specification Guide

| | |
|---------------------------------|--|
| Permanent or portable | Both |
| Floor panel sizes | 1m x 1m & 2m x 1m |
| Minimum floor thickness | 37mm (before inclusion of chosen finish) |
| Weight | 12.5kg/m ² |
| Testing standard | EN 14904-2006 |
| Average shock absorption | 67% |
| Maximum point load (BS EN 1195) | 1126kg |
| Area deflection | 12.8% |
| Rolling load | >1500N |
| Vertical deformation | 4.1mm |



Selected Harlequin vinyl performance floor

Clear layered birch plywood with rounded tongue and groove, plus a latch and lock system

Dual density shock damping elastomer blocks at predetermined intervals

A 220g black polymer resin on both sides of the plywood. The wear side has a textured, high grip pattern; the reverse side is smooth.

Dual density shock dampening elastomer pads at predetermined intervals. For portable panels, pads will have clear PVC protection.

Birch plywood with a rounded tongue and groove plus a latch and lock system

Harlequin Liberty

Harlequin Liberty is a modular sprung dance floor panel system, designed for permanent or portable installation. Panels are laid in a brickwork fashion onto the sub-floor, so that cross joins do not coincide. The panels lock securely together using our unique 'one turn of the key' latch and lock mechanism.

Harlequin Liberty can be used wherever a permanent or temporary performance surface is required and is in high demand for touring productions and film shoots.

Our hire service can include

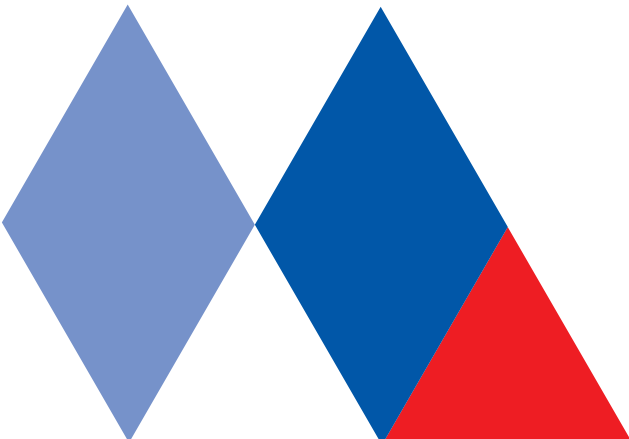
- Delivery
- Installation
- Removal
- Collection

Harlequin Liberty HD

Harlequin Liberty HD is a further development of our renowned Liberty panel system, designed with enhanced durability in mind, for more challenging environments. The panels are overlaid with a black polymer resin. The top surface has a textured high grip pattern and is wear resistant, anti-slip and weatherproof.

Harlequin Liberty HD is suitable for exterior use in covered areas and is widely used for festivals, theme parks and similar applications.

To speak to our highly experienced Sales team about your floor hire needs call **0800 28 99 32**



SOME RECENT HARLEQUIN PROJECTS

Beyonce, Take That, Shawn Mendes, Kylie, Hugh Jackman, Christina Aguilera

These major artists toured globally on Harlequin performance vinyl stage sets.

Client - Stufish | Brilliant Stages



Barbican Centre AI Exhibition

A specially commissioned gloss black Harlequin Hi-Shine vinyl performance floor was selected for its reflective qualities.

Client – Barbican | TeamLab

British Fashion Awards | MTV European Music Awards | BRIT Awards

Harlequin Hi-Shine vinyl performance flooring is seen at the highest profile industry events.

Client – MTV





42nd Street

London's West End musical production '42nd Street' rehearsed on Harlequin Liberty sprung panels topped with Harlequin Reversible vinyl.

Client – GL Ltd (Michael Grade and Michael Linnit Gate Ventures)

Film and TV Production

Harlequin Liberty hire floors are used on the sets of major motion pictures.

Client – TV and film production companies



Selfridges | Fenwicks | Aspinall | Hackett London

Harlequin vinyl is used to creative effect in visual merchandising window display

British Harlequin plc

Festival House, Chapman Way, Tunbridge Wells, Kent TN2 3EF
Tel: +44 (0)1892 514888
Email: enquiries@harlequinfloors.com

Harlequin Europe SA

29 rue Notre-Dame, L-2240 Luxembourg
Tel: +352 46 44 22
Email: info@harlequinfloors.com

Harlequin Deutschland GmbH

Melanchthonstraße 16, 10557 Berlin, Germany
Tel: +49 (0) 30 340 441 600
Email: anfrage@harlequinfloors.com

American Harlequin Corporation

1531 Glen Avenue, Moorestown, NJ 08057, USA
Tel: +1 (856) 234 5505
Email: contact@harlequinfloors.com

Australian Harlequin Pty Ltd

2/11 Penny Place, Arndell Park, NSW 2148, Australia
Tel: +61 (2) 9620 7770
Email: auscontact@harlequinfloors.com

Harlequin Asia Limited

2/F The Strand, 49 Bonham Strand, Sheung Wan, Hong Kong
Tel: +852 254 11 666
Email: hksales@harlequinfloors.com



HARLEQUIN
www.harlequinfloors.com

