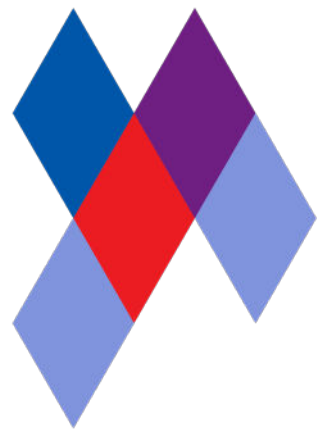


# Harlequin Standfast™



**Harlequin Standfast** is a durable multi-purpose homogeneous vinyl performance floor with a slip-resistant surface. It is an ideal heavy-duty floor for studios as well as stage flooring for dance studios and theatres.

**Installation:** Harlequin Standfast is specified for permanent installation, the joins are heat welded to form a continuous performance surface. It can be laid on any hard, smooth subfloor and is an excellent choice as a vinyl performance surface in conjunction with a Harlequin sprung floor.

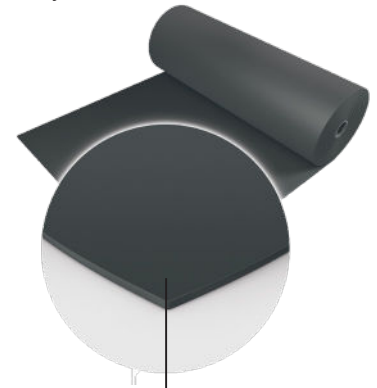
**Usage:** Harlequin Standfast is suitable for theatre, drama and many genres of dance including percussive dance (flamenco, Irish and tap), hip-hop, jazz, street and Zumba. It is also ideal as a multi-use stage floor.

## Specification Guide

Material	Homogeneous vinyl
Permanent or Portable	Permanent
Roll Lengths	10m, 15m, 20m
Roll Width	1.5m
Thickness	2.6mm
Weight	3.4kg/m <sup>2</sup>
Finish	Smooth
Fire Rating	Cfl-s1 (EN 13501-1)
Warranty	10 years if installed by Harlequin 5 years if installed by the customer
Impact Sound Reduction	3dB, with Activity sprung floor 22dB
Fixing Type	Adhesive
Seams	Welded
Light Reflectance	406-8, 501-2, 004-28
Gloss Level	Nominal 6
Lightfastness	>6
Recycled Content	23-30%
VOC Emissions	≤0.5mg/m <sup>3</sup>
Recyclability	100%
Underfloor Heating	Suitable for use with underfloor heating
Third Party Certification	Environmental Product Declaration A+ LEED, BREEAM, REACH Compliant

Available Colours:

Dark Grey - 406



Homogeneous vinyl with a slip-resistant performance surface

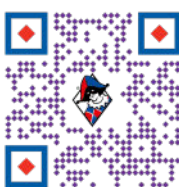
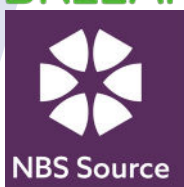
Grey - 004



Black - 501

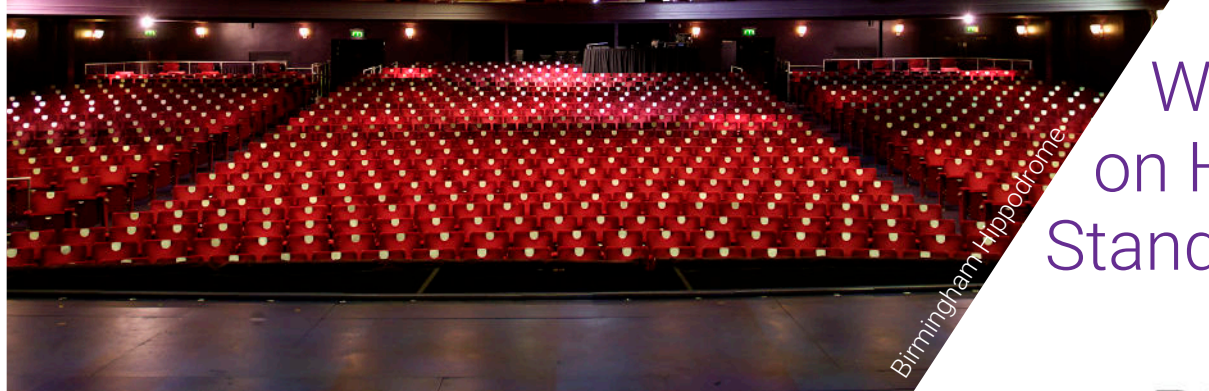
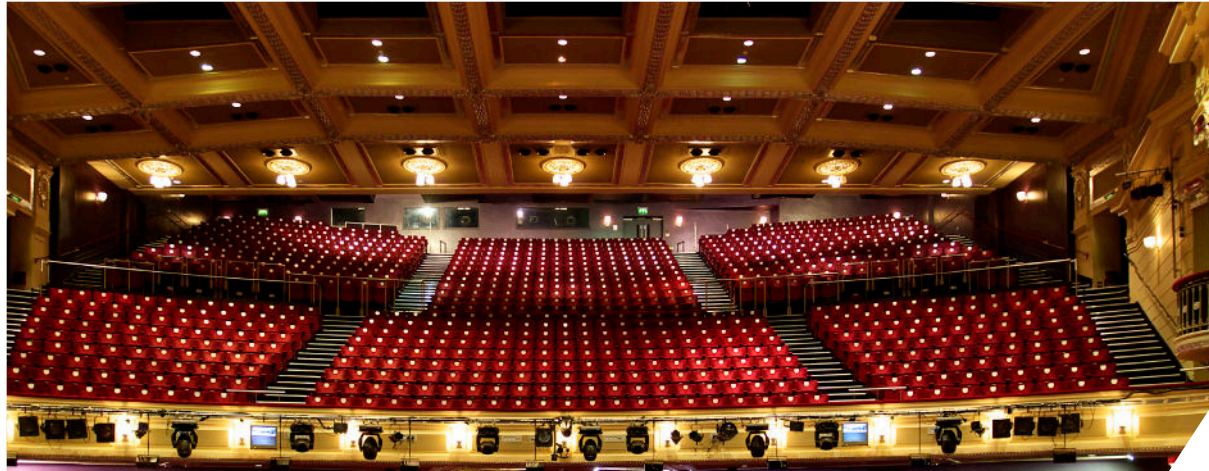


**BREEAM® vinyl plus**  
COMMITTED TO SUSTAINABLE DEVELOPMENT



**HARLEQUIN**  
www.harlequinfloors.com

LONDON ♦ LUXEMBOURG ♦ BERLIN ♦ MADRID ♦ PARIS ♦ LIEGE ♦ PHILADELPHIA ♦ LOS ANGELES ♦ FORT WORTH ♦ SYDNEY ♦ HONG KONG ♦ TOKYO



Who performs  
on Harlequin  
Standfast™

ROYAL  
DERNGATE &  
NORTHAMPTON

 UNIVERSITY of  
GREENWICH



ROYAL  
BALLET  
SCHOOL

  
BIRMINGHAM  
HIPPODROME

Kingston  
University  
London



If you would like further information or advice please contact us on  
**+44(0) 1892 514 888 or [enquiries@harlequinfloors.com](mailto:enquiries@harlequinfloors.com)**

The Company reserves the right to make any variation in design or construction of the material described. Harlequin® is a registered trademark of British Harlequin plc. © Harlequin Floors 07/2023

 **HARLEQUIN**  
[www.harlequinfloors.com](http://www.harlequinfloors.com)