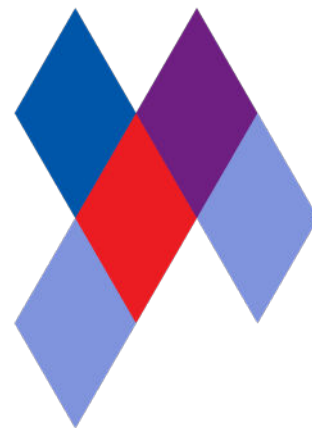


# Harlequin Reversible™



**Harlequin Reversible** is the original double-sided vinyl performance floor. It is a versatile, lightweight and durable calendared vinyl with a slip-resistant performance surface on both sides.

**Installation:** Harlequin Reversible is specified for temporary 'loose-lay' installation and can be rolled out on any flat, smooth surface. The joins are taped to form a continuous performance surface that rolls out quickly, lays flat and stays flat making it ideal for touring.

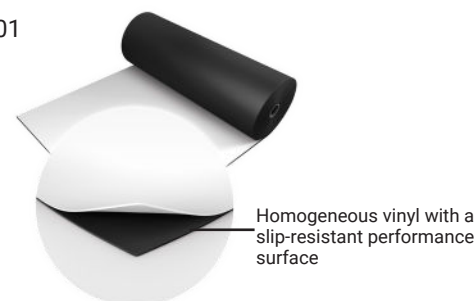
**Usage:** Harlequin Reversible is suitable for use in theatres, concerts, display, exhibitions, television, aerobics and for many genres of dance including ballet, contemporary, percussive dance (flamenco, Irish and tap) hip-hop, jazz, street and Zumba.

## Specification Guide

Material	Homogeneous vinyl
Permanent or Portable	Portable
Roll Lengths	10m, 15m, 18m, 20m, 25m, 30m
Roll Width	2m
Thickness	1.30mm
Weight	1.60kg/m <sup>2</sup>
Finish	Smooth
Fire Rating	Bfl-s1 (EN 13501-1)
Warranty	10 years if installed by Harlequin 5 years if installed by the customer
Impact Sound Reduction	2dB
Fixing Type	Tape
Seams	Taped
Health and Safety	REACH Compliant
Light Reflectance	001 - 2/83, 003 - 20/43, 004 - 2/34, 310 - 10/29, 890 - 20/38, 005 - 2/65, 302 - 2/31, 119 - 4/4
Gloss Level	Nominal 4
Lightfastness	≥6
Recycled Content	23-30%
VOC Emissions	≤0.5mg/m <sup>3</sup>
Recyclability	100%
Underfloor Heating	Not suitable for underfloor heating
Third Party Certification	Environmental Product Declaration A+ LEED, BREEAM, REACH Compliant

## Available Colours:

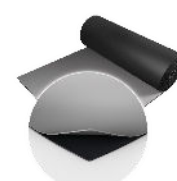
Black/White - 001



Dark Grey/Light Grey - 003



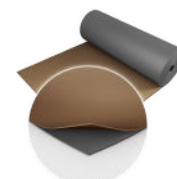
Black/Grey - 004



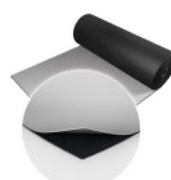
Hazelnut/Beige - 310



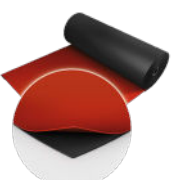
Fog/Tan - 890



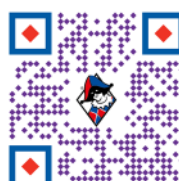
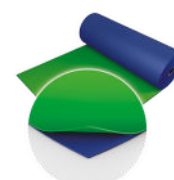
Black/Projection Grey - 005



Red/Black - 302



Chroma key Green/Blue - 119



**HARLEQUIN**  
www.harlequinfloors.com



Who performs  
on Harlequin  
Reversible™

Ballet Boyz



Burn The Floor tour



THE LONDON  
PALLADIUM



Jean Michel Jarre

If you would like further information or advice please contact us on  
+44(0) 1892 514 888 or [enquiries@harlequinfloors.com](mailto:enquiries@harlequinfloors.com)

The Company reserves the right to make any variation in design or construction of the material described. Harlequin® is a registered trademark of British Harlequin plc. © Harlequin Floors 07/2023

