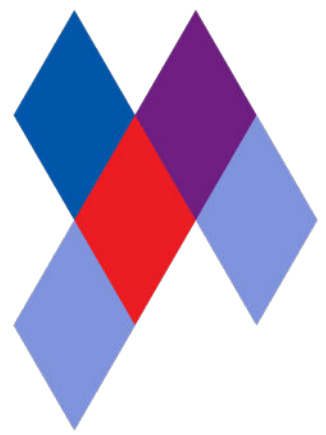


Harlequin Hi-Shine™



Harlequin Hi-Shine has a unique scratch resistant, high-gloss surface which creates a striking glossy, reflective surface. It is a hard-wearing and reusable vinyl floor, ideal for touring.

Installation: Harlequin Hi-Shine is specified for temporary 'loose-lay' installation, the joints are taped to create a continuous performance surface. It can be rolled out on any flat, smooth surface. It rolls out quickly, lays flat and stays flat.

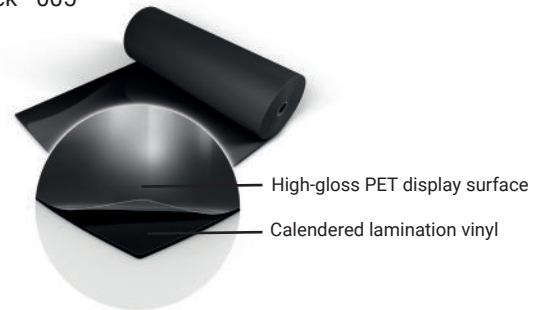
Usage: Harlequin Hi-Shine is widely used for concerts and touring bands, film and television sets, fashion shows, product launches, parties, exhibitions, museums, window displays, theatrical and operatic productions and many other events.

Specification Guide

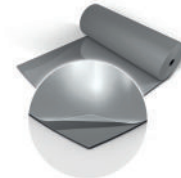
| | |
|---------------------------|---|
| Material | Heterogeneous vinyl |
| Permanent or Portable | Portable |
| Roll Lengths | Metallics & Colours - 10m, 15m, 20m, 30m Blue - 10m, 20m |
| Roll Width | 1.5m |
| Thickness | 1.5mm |
| Weight | 1.96kg/m ² |
| Finish | Smooth |
| Fire Rating | Bfl-s1 (EN 13501-1) |
| Warranty | 2 years |
| Impact Sound Reduction | 3dB |
| Fixing Type | Tape |
| Seams | Taped |
| Gloss Level | High gloss |
| Lightfastness | ≥6 |
| Recycled Content | 23-30% |
| VOC Emissions | ≤0.5mg/m ³ |
| Recyclability | 100% |
| Underfloor Heating | Not suitable for use with underfloor heating |
| Third Party Certification | Environmental Product Declaration A+ LEED, BREEAM, REACH Compliant |

Available Colours:

Black - 005



Grey - 002



White - 019



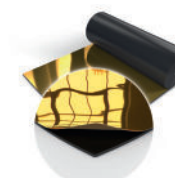
Red - 038



Blue - 039



Metallic Gold - 050



Metallic Silver - 025





Pandora



After Love - © Decland Colohan



Who performs on Harlequin Hi-Shine™

PANDORA



THE LONDON PALLADIUM



PRADA



If you would like further information or advice please contact us on +44(0) 1892 514 888 or enquiries@harlequinfloors.com

The Company reserves the right to make any variation in design or construction of the material described. Harlequin® is a registered trademark of British Harlequin plc. © Harlequin Floors 07/2023

