

# Harlequin Cascade™

**Harlequin Cascade** still delights generations of professional dancers, artistic directors and technical and stage managers as the ultimate heavy-duty dance floor. The silky smooth embossed surface that's often described as giving 'warmth' to a performance, also provides deceptively good grip, as well as a high-quality base for lighting designers.

**Harlequin Cascade** is ideal for ballet, contemporary, modern and theatrical use, as well as aerobics, zumba, hip-hop, jazz, street, salsa, percussive including flamenco, Irish and tap, multi-purpose use, concerts and for operatic performances.

**Harlequin Cascade** is specified for loose-lay or permanent installation within dance institutions, dance studios, schools and theatres and is an excellent choice as the vinyl dance surface in conjunction with a Harlequin sprung floor.

## Specification guide

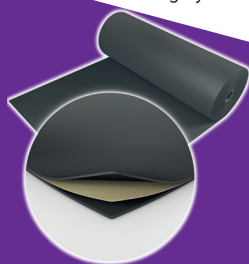
<b>Permanent or Portable</b>	Both
<b>Roll width</b>	2m
<b>Roll length</b>	10m, 15m, 18m, 20m, 25m
<b>Colours</b>	Black, Pale grey, Dark grey, Hazelnut, White
<b>Thickness</b>	2mm
<b>Weight</b>	2.6kg/m <sup>2</sup>
<b>Fire rating</b>	Bfl-s1 (EN 13501-1)
<b>Health and Safety</b>	REACH compliant



Black - 501



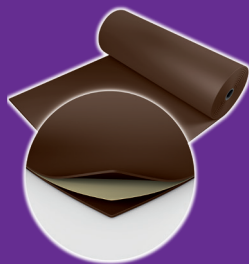
Dark grey - 406



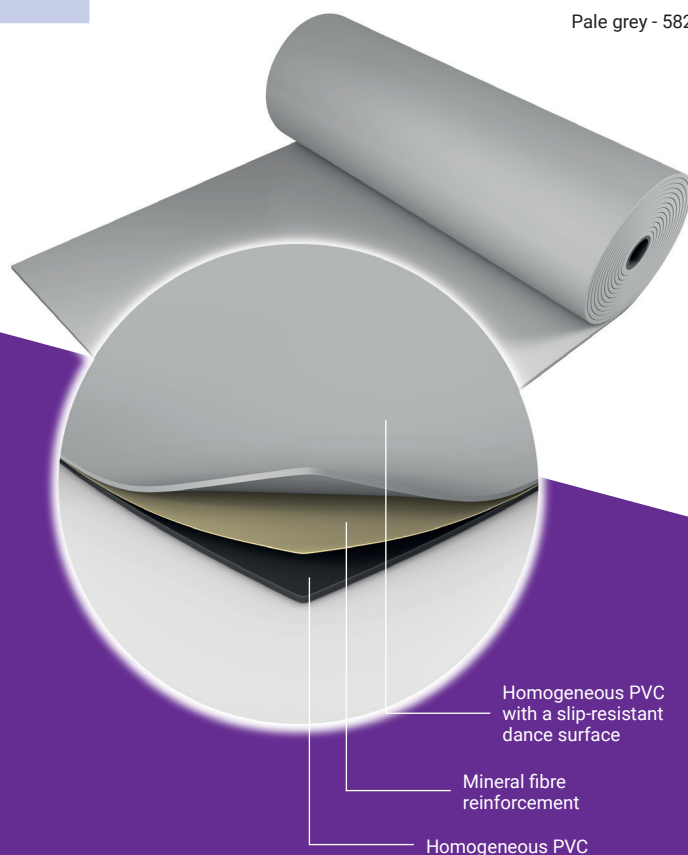
White - 100



Hazelnut - 470



Pale grey - 582



If you would like further information, advice and samples please contact us on +44(0) 1892 514 888 or [enquiries@harlequinfloors.com](mailto:enquiries@harlequinfloors.com)



**HARLEQUIN**  
[www.harlequinfloors.com](http://www.harlequinfloors.com)